

VOID

Hear. Feel. Connect.

voidacoustics.com



Cyclone 208i

Premium sound, simplified set-up

USER GUIDE V1.1

©2026 Void Acoustics Research Ltd.

This user guide is subject to change without notice.
For the latest online version, visit: www.voidacoustics.com

Void Acoustics and the Void logo are registered trademarks of Void Acoustics Research Ltd. in the United Kingdom, USA and other countries; all other Void trademarks are the property of Void Acoustics Research Ltd.

Contents

1	Safety and Regulations	5
1.1	Important safety instructions	5
1.2	Limitations	5
1.3	EC declaration of conformity	5
1.4	UKCA conformity	5
1.5	Warranty statement	5
1.6	WEEE directive	5
2	Unpacking and Checking	6
3	About	7
3.1	Welcome	7
3.2	Overview	7
3.3	Key Features	7
4	Cable and Wiring	8
4.1	Electrical safety	8
4.2	Cable considerations for fixed installations	8
4.3	Cyclone 208i wiring	8
4.4	Input connectors	9
4.5	Output connectors	9
4.6	Fuse rating	10
5	DSP	11
5.1	Cyclone 208i components	12
5.2	Cyclone 208i factory presets	12
5.3	Selecting your preset	12
5.4	LED chart	13
5.5	Software	14
5.6.1	Changing network settings	15
5.6.2	Changing default presets	16
5.7	Network troubleshooting	18
5.8	Power management	19
5.9	Processing architecture	20
5.10	Internal signal path polarity	21
6	Mounting	22
6.1	Installation safety	23
6.2	Ground stack bracket	23

Contents

7	Service	24
7.1	Return authorisation	24
7.2	Shipping and packing considerations	24
8	Appendix A: Specifications	25
A.1	Cyclone 208i specifications	25
8	Appendix B: DSP	26
B.1	Cyclone 208i DSP	26
8	Appendix C: Amplifier	27
C.1	Cyclone 208i amplifier	27
8	Appendix D: Dimensions	28
D.1	Cyclone 208i dimensions	28
8	Appendix E: Architectural specifications	29
E.1	Cyclone 208i architectural specifications	29
F.1	Changelog	29

1 Safety and Regulations

1.1 Important safety instructions



The lightning flash with an arrowhead symbol within an equilateral triangle is intended to alert the user to the presence of uninsulated "dangerous voltage" within the product's enclosure that may be of sufficient magnitude to constitute a risk of electric shock to persons.



The exclamation point within an equilateral triangle is intended to alert the user of the presence of important operating and maintenance (servicing) instructions in the literature accompanying the appliance.

Safety instructions - read this first

1. Read these instructions.
2. Keep these instructions.
3. Heed all warnings.
4. Follow all instructions.
5. Do not use this apparatus near water.
6. Clean only with a dry cloth.
7. Do not block any ventilation openings. Install in accordance with the manufacturer's instructions.
8. Do not install near any heat source such as radiators, heat registers, stoves, or other such apparatus that produce heat.
9. Do not defeat the safety purpose of the grounding-type plug. A grounding type plug has two blades and a third grounding prong. The third prong is provided for your safety. If the provided plug does not fit into your outlet, consult an electrician for replacement of the obsolete outlet.
10. Protect power cords from being walked on or pinched particularly at plugs, convenience receptacles, and the point where they exit the apparatus.
11. Only use attachments and accessories specified by Void Acoustics.
12. Only use with the cart, stand, tripod, bracket, or table specified by the manufacturer, or sold with the apparatus. When a cart is used, use caution when moving the cart/apparatus combination to avoid injury from tip-over.
13. Unplug the apparatus during lightning storms or when unused for long periods of time.
14. Refer all servicing to qualified service personnel. Servicing is required when the apparatus has been damaged in any way, such as when the power-supply cord or plug is damaged, liquid has been spilled or objects have fallen into the apparatus, the apparatus has been exposed to rain or moisture, does not operate normally, or has been dropped.
15. Since the mains power supply cord attachment plug is used to disconnect the device, the plug should always be easily accessible.
16. Void loudspeakers can produce sound levels capable of causing permanent hearing damage from prolonged exposure. The higher the sound level, the less exposure needed to cause such damage. Avoid prolonged exposure to the high sound levels from the loudspeaker.

1.2 Limitations

This guide is provided to help familiarise the user with the loudspeaker system and its accessories. It is not intended to provide comprehensive electrical, fire, mechanical and noise training and is not a substitute for industry-approved training. Nor does this guide absolve the user of their obligation to comply with all relevant safety legislation and codes of practice. While every care has been taken in creating this guide, safety is user-dependent and Void Acoustics Research Ltd cannot guarantee complete safety whenever the system is rigged and operated.

1.3 EC declaration of conformity

For EC Declaration of Conformity please go to:

www.voidacoustics.com/eu-declaration-loudspeakers

1.4 UKCA marking

For details of the UKCA marking go to:

www.voidacoustics.com/uk-declaration-loudspeakers

1.5 Warranty statement

For warranty statement go to:

<https://voidacoustics.com/terms-conditions/>

1.6 WEEE directive

If the time arises to throw away your product, please recycle all the components possible.



This symbol indicates that when the end-user wishes to discard this product, it must be sent to separate collection facilities for recovery and recycling. By separating this product from other household-type waste, the volume of waste sent to incinerators or land-fills will be reduced and natural resources will thus be conserved.

The Waste Electrical and Electronic Equipment Directive (WEEE Directive) aims to minimise the impact of electrical and electronic goods on the environment. Void Acoustics Research Ltd complies with the Directive 2002/96/EC and 2003/108/EC of the European Parliament on waste electrical and electronic equipment (WEEE) in order to reduce the amount of WEEE that is being disposed of in land-fill sites. All of our products are marked with the WEEE symbol; this indicates that this product must NOT be disposed of with other waste. Instead it is the user's responsibility to dispose of their waste electrical and electronic equipment by handing it over to an approved reprocessor, or by returning it to Void Acoustics Research Ltd for reprocessing. For more information about where you can send your waste equipment for recycling, please contact Void Acoustics Research Ltd or one of your local distributors.



2 Unpacking and Checking

All Void Acoustics products are carefully manufactured and thoroughly tested before being despatched. Your dealer will ensure that your Void products are in pristine condition before being forwarded to you but mistakes and accidents can happen.

Before signing for your delivery:

- Inspect your shipment for any signs of contamination, abuse or transit damage as soon as you receive it
- Check your Void Acoustics delivery fully against your order
- If your shipment is incomplete or any of its contents are found to be damaged; inform the shipping company and inform your dealer.

When you are removing your Cyclone 208i loudspeaker from its original packaging:

- Cyclone 208i loudspeakers come double boxed and each box is stapled shut; take care when unboxing and removing the staples to avoid injury or damage to the loudspeaker
- If you need to place the Cyclone 208i loudspeaker on a flat surface ensure you use a lint free product to protect the finish
- When you have removed the Cyclone 208i loudspeaker from the packaging inspect it to ensure there is no damage and keep all original packaging in case it needs to be returned for any reason.

See section 1.5 for warranty conditions and see section 7 if your product needs servicing.

3 About

3.1 Welcome

Many thanks for purchasing this Void Acoustics Cyclone 208i loudspeaker. We truly appreciate your support. At Void, we design, manufacture and distribute advanced professional audio systems for the installed and live sound market sectors. Like all Void products, our highly skilled and experienced engineers have successfully combined pioneering technologies with ground-breaking design aesthetics, to bring you superior sound quality and visual innovation. In buying this product, you are now part of the Void family and we hope using it brings you years of satisfaction. This guide will help you both use this product safely and ensure it performs to its full capability.

3.2 Overview

The Cyclone 208i is a dual 8" powered loudspeaker with DSP, featuring a 600 W integrated amplifier with two 150W (4 Ω) Phoenix outputs and 4 onboard preset banks. Void loudspeaker presets can be switched out and saved using ArmoníaPlus control software. These advanced features and the evocative Void sound combine to provide flawless bass reproduction for commercial and residential applications, satisfying the requirements of leading sound installation contractors and integrators around the world, and making the Cyclone 208i the ultimate choice for bars, clubs, lounges, hotels and restaurants.

3.3 Key features

- Active, dual 8 inch subwoofer with on board 600 W amplifier module
- Two 150 W outputs (4 Ω) via Phoenix connector
- 24-bit, 48 kHz DSP with 4 onboard preset banks
- Compatible with Void speaker preset library and ArmoníaPlus software
- Reflex-loaded dual 8 inch subwoofer
- Stainless steel grille and fasteners
- Ground stack bracket included
- Stylised design in a low-resonance fibreglass enclosure
- UV resilient finish
- Available as standard in red with a black grille, black with a black grille, and white with a white grille. Custom RAL and KROME finishes are available upon request

4 Cable and Wiring

4.1 Electrical safety

To avoid electrical hazards please note the following:



- Do not access the inside of any electrical equipment. Refer servicing to Void-approved service agents.

4.2 Cable considerations for fixed installations

We recommend specifying installation-grade Low Smoke Zero Halogen (LSZH) cables for permanent installations. The cables should use Oxygen Free Copper (OFC) of grade C11000 or above. Cables for permanent installations should be compliant with the following standards:

- IEC 60332.1 Fire retardancy of a single cable
- IEC 60332.3C Fire retardancy of bunched cables
- IEC 60754.1 Amount of Halogen Gas Emissions
- IEC 60754.2 Degree of acidity of released gases
- IEC 61034.2 Measurement of smoke density.

4.3 Cyclone 208i wiring

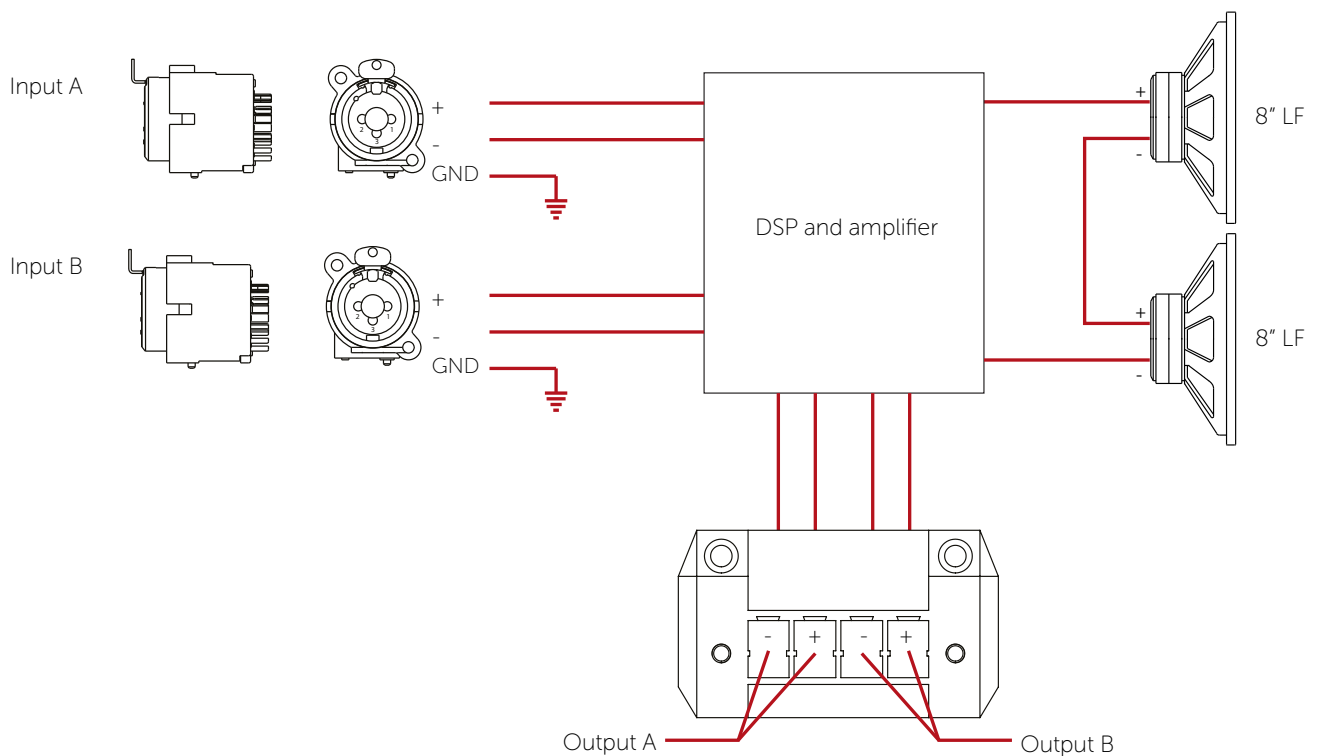


Figure 4.1: Cyclone 208i wiring diagram

4 Cable and Wiring

4.4 Cyclone 208i Input connectors

Analogue input XLR-M pinout

Pin 1	GND
Pin 2	Hot +
Pin 3	Cold -

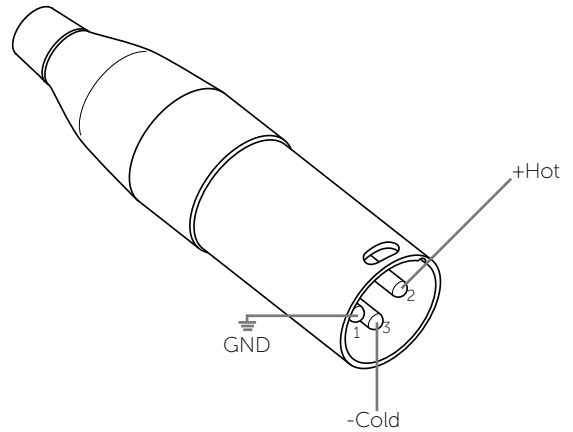


Figure 4.2: XLR-M diagram

Analogue input TRS Jack pinout

Tip	Hot +
Ring	Cold -
Sleeve	GND

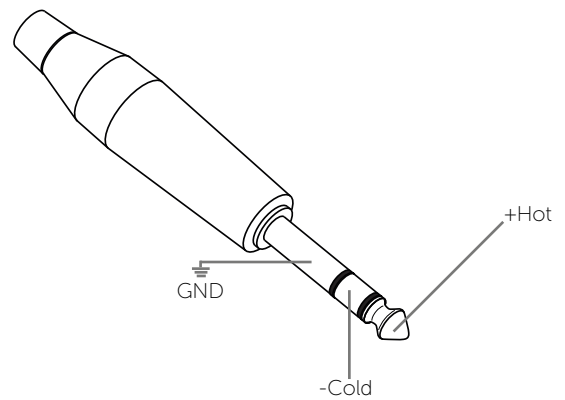


Figure 4.3: TRS Jack diagram

4.5 Cyclone 208i Output connectors

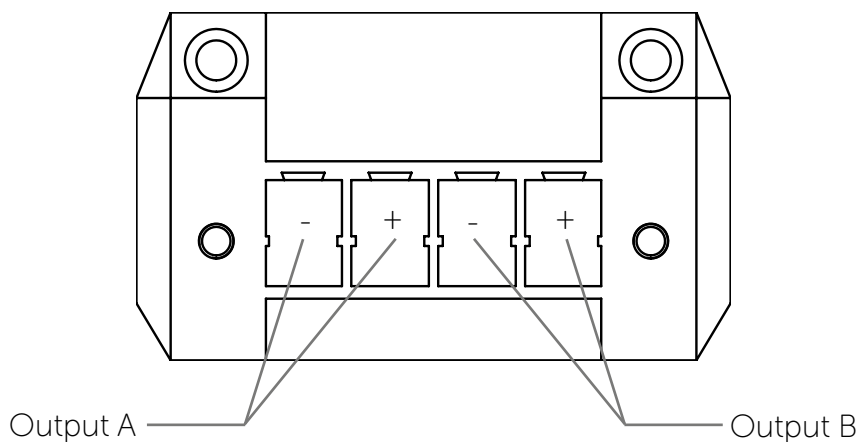


Figure 4.4: Output phoenix connector

4 Cable and Wiring

4.6 Fuse rating Cyclone 208i

Cyclone 208i loudspeakers have two voltage options, 230 V and 115 V, depending on the orientation of the fuse holder. To access the fuse, the ground stack bracket will need to be removed. Change the voltage using the following steps:



Step 1: Remove the fuse holder cover by using a flat head screwdriver as shown.



Step 2: Remove the fuse holder by using a flat head screwdriver as shown.



Step 3: Remove the fuse holder and rotate so that the voltage rating you require is oriented to the left.



Step 4: Insert the fuse holder ensuring it is fully engaged.



Step 5: Push the fuse holder cover in so that it is completely sealed.

5 DSP

5.1 Cyclone 208i components

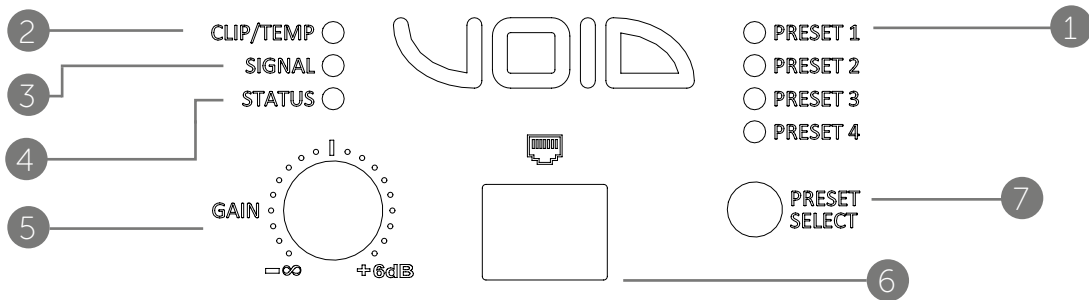


Figure 5.1: LED panel

1. Preset LEDs
2. Signal clipping LED
3. Signal presence/limiting LED
4. Status LED
5. Volume potentiometer
6. Ethernet connector
7. Preset select
8. Phoenix connector output
9. Combi Jack - XLR input signal connector input A
10. Combi Jack - XLR input signal connector input B
11. Air vent
12. IEC C13 power input

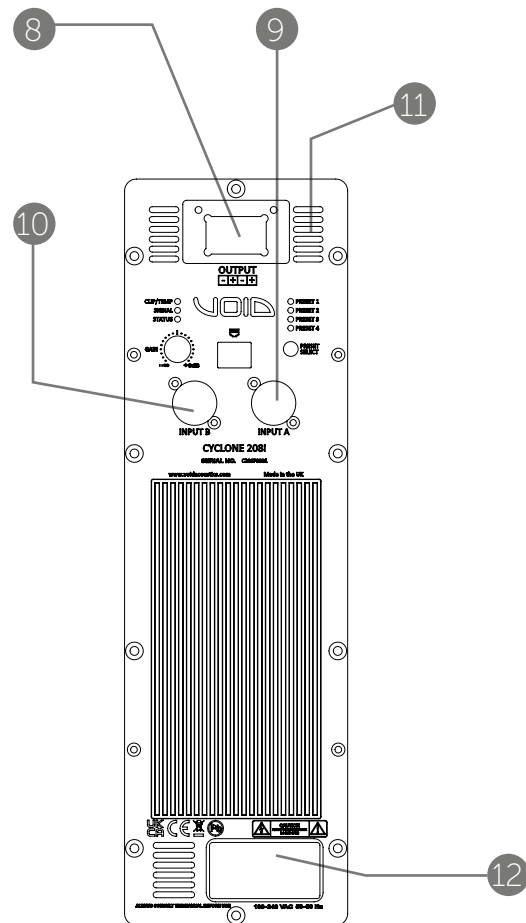


Figure 5.2: Rear panel

5 DSP

5.2 Cyclone 208i factory presets

Factory presets for the Cyclone 208i are as follows:

Preset 1	Cyclone 4
Preset 2	Cyclone 55
Preset 3	Indigo 6s
Preset 4	Venu 6 V2

5.3 Selecting your preset

To change your Cyclone 208i preset

1. Apply power to the amplifier
2. Wait 15 seconds for the amplifier to initialize
3. Press the preset button
4. The next selected preset light will begin flashing
5. When the preset LED stops flashing and becomes steady the amplifier is ready to use in that preset mode.

For alternative loudspeaker presets, please download the relevant files from the support documents tab found on <https://voidacoustics.com/resources-and-support>

5 DSP

5.4 LED chart - Cyclone 208i

Clip/temp LED

Colour	Solid on	Action required
Off	Temperature OK, no clipping	No action required
Yellow	High amplifier temperature	Reduce system gain
Red	Output signal clipping	Reduce system gain

Signal LED

Colour	Solid on	Action required
Green	Input signal present, output not in limit	No action required
Yellow	Output limiter engaging	Reduce system gain
Red	Input signal clipping	Reduce input gain

Status LED

Colour	Solid ON
Off	System off
Green	System ready to play, auto standby mode disabled
Cyan	System ready to play, auto standby mode enabled
Blue	System in standby mode: no signal detected in the last 15 minutes

5 DSP

5.5 Software

1. Download and install ArmoníaPlus from the support page on the Void Acoustics website. Download the Cyclone 208i speaker model from the marketplace within ArmoníaPlus
2. Connect an ethernet cable from the Cyclone 208i speaker to the PC or router
3. Open ArmoníaPlus and click on the cog wheel in the bottom right corner of the window. Ensure that the appropriate network interface is enabled under the Communication Manager tab

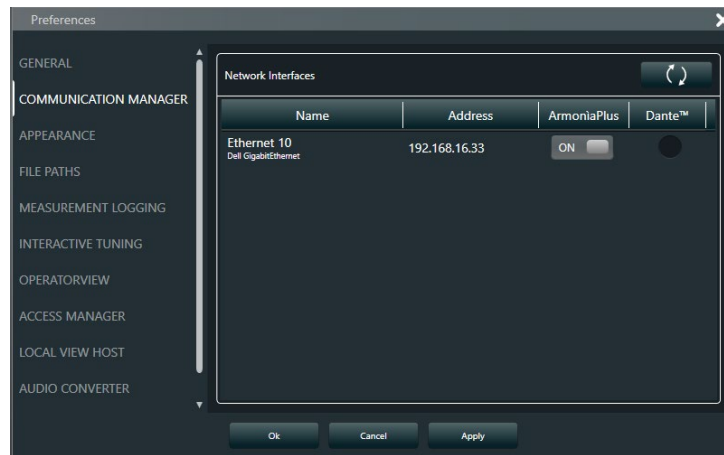


Figure 5.7: Armonía Plus communications manager

4. Click on Match under the design tab, then Discovery. ArmoníaPlus should now be able to detect the device.

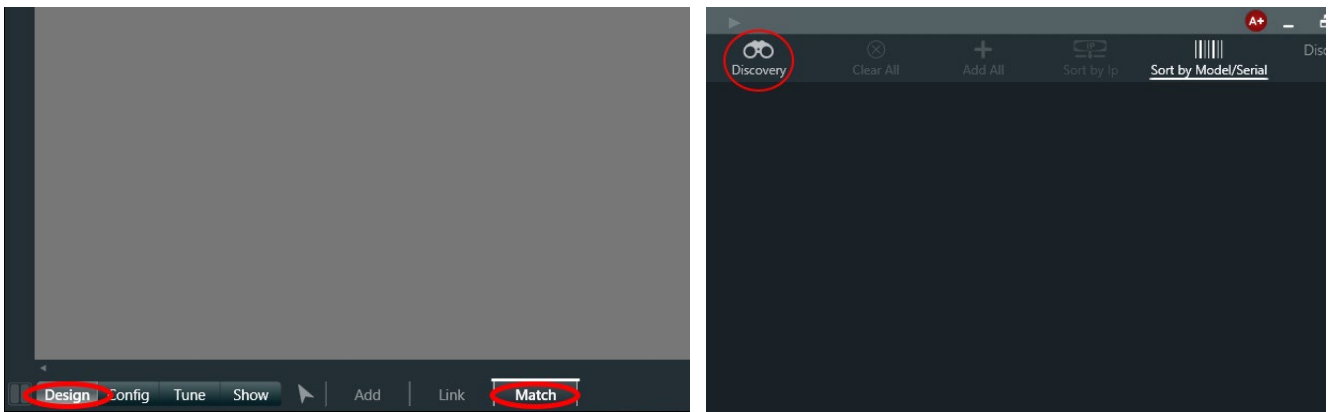


Figure 5.8: Armonía Plus tab selection

5. Click on the red Synchronisation button in the top right corner of the window. Turn Synchronisation on. You will now be able to add the device to the workspace and access the DSP.

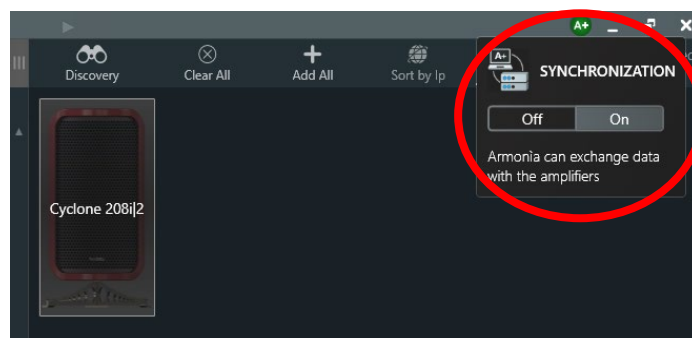


Figure 5.9: Synchronisation and DSP access

5 DSP

5.6.1 Changing network setting

Once added to the workspace, double click on the Cyclone powered speaker to access the processing options. The Network Settings section is available by clicking on the button under the Scheme window. Here you can view the current ethernet status and change address settings.

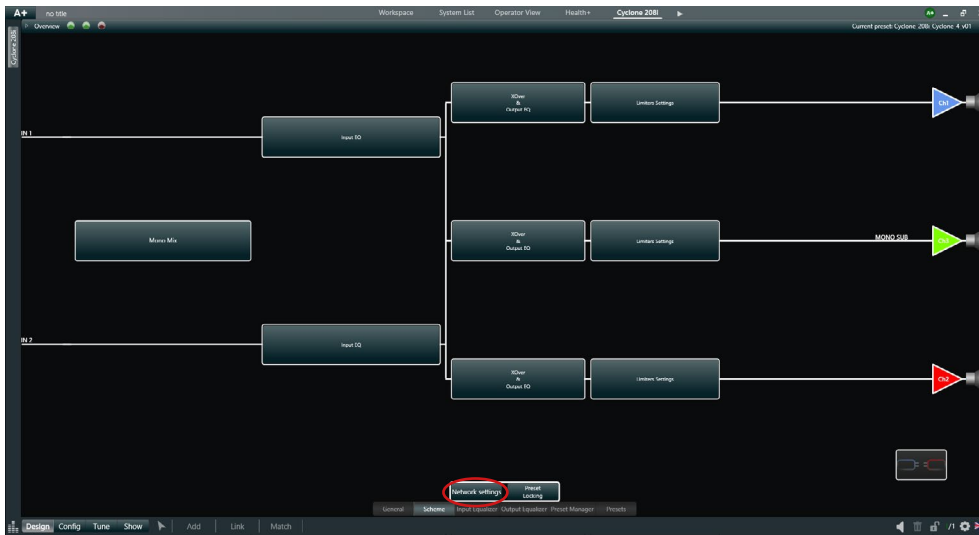


Figure 5.10: Scheme window

In order to set a static IP, click on Change Address Settings, choose Static as Addressing Mode and enter the chosen IP address. Be aware that changing these settings could break communication with the Cyclone 208i speaker. Confirm the changes by clicking on Apply Settings. The new static IP will be applied immediately.

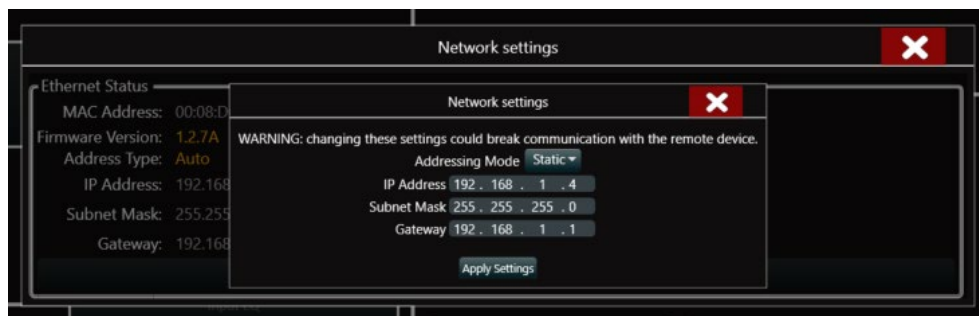


Figure 5.11: Network settings

5 DSP

5.6.2 Changing default presets

Download and unzip a preset pack from the 'support docs' section on the product page of the Void website. After loading in your powered speaker model to the Add page, select the arrow tool between the 'Show' and 'Add' buttons, then double click on the Cyclone 208i speaker to access the amp settings. From the row of amp DSP options along the bottom select 'presets'.

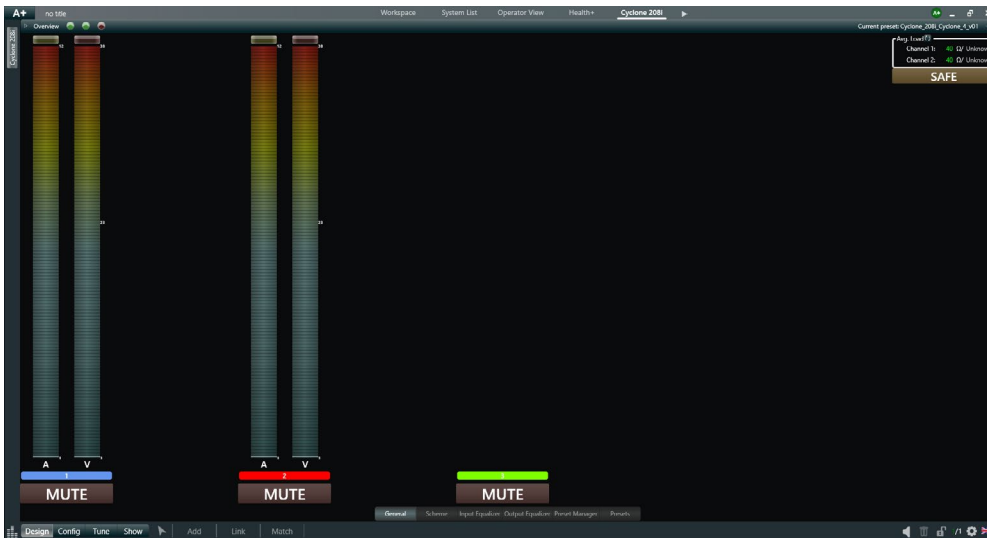


Figure 5.12: Scheme window

Now select which one of the four available preset slots you wish to edit by choosing the relevant 'recall' button (preset 2 selected).

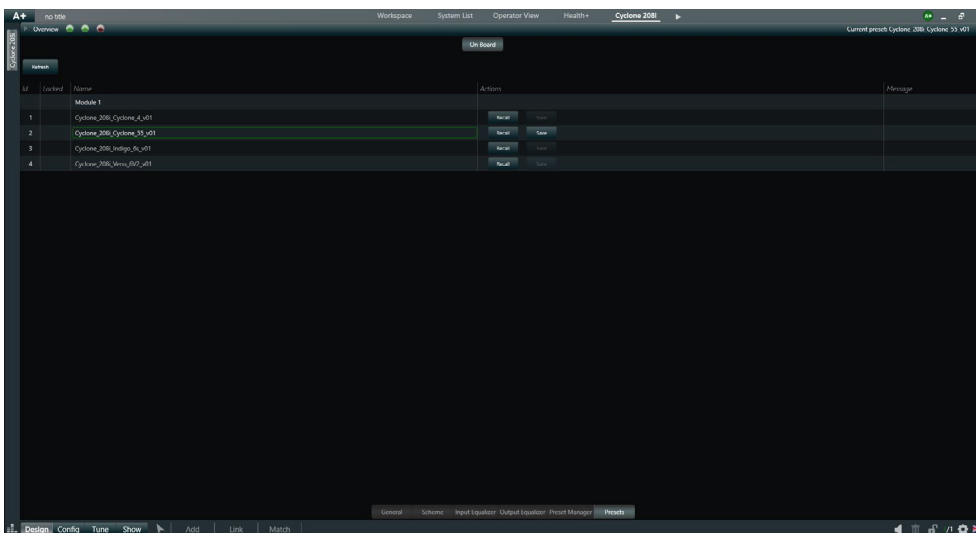


Figure 5.13: Scheme window

5 DSP

Navigate back to the main Armonía 'Add' page and right click the amp. Select 'PAM', then select 'import'. Select the preset you wish to load from the unzipped downloaded preset folder (Air 8 shown). At the 'do you really want to overwrite settings' prompt, select Yes. Armonía will now load the preset from your computer to the internal DSP on the amp. Double click on the amp to confirm the desired preset is loaded.

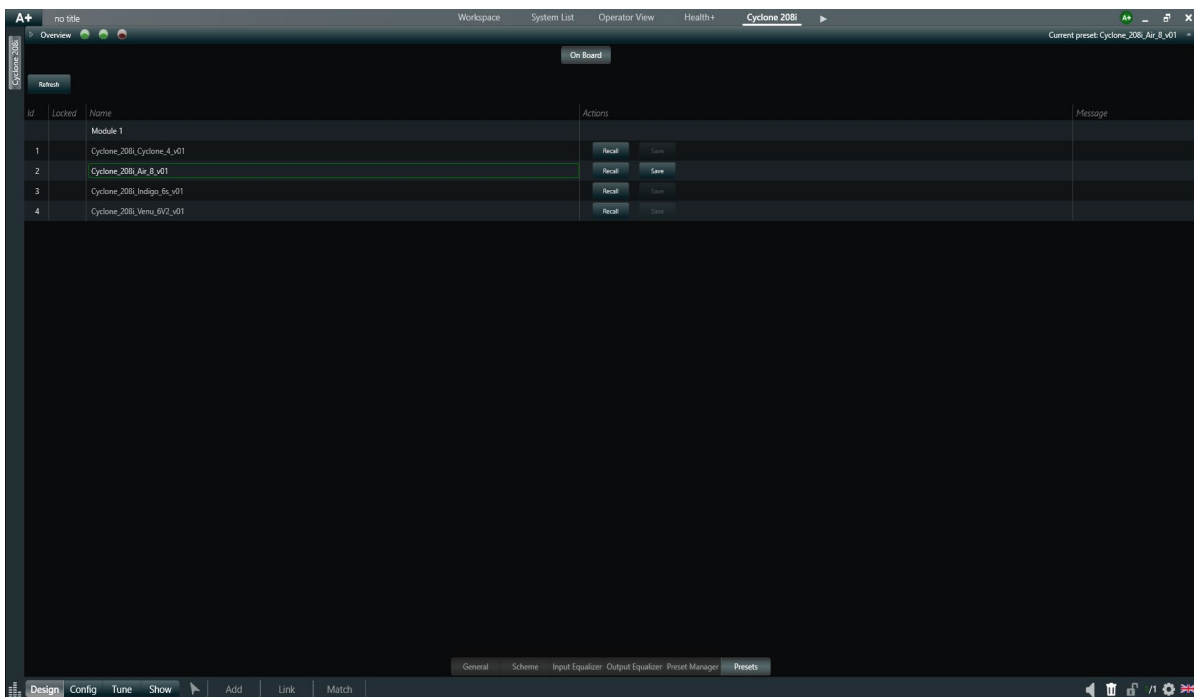


Figure 5.14: Scheme window

5.7 Network troubleshooting

The Cyclone 208i cannot be discovered by ArmoníaPlus when it is set with a different subnet than the network card to which it's connected. In this case, after you have clicked on Discovery, ArmoníaPlus will report that a connected device has an incompatible IP address.

Hovering the mouse pointer above the alert message displayed at the bottom of the Match window will show the current device IP address. In order to discover the Cyclone 208i you will need to adjust the settings of the PC network card to be compatible with those of the product being connected to:

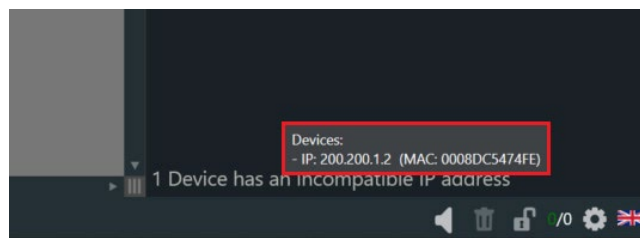


Figure 5.15: IP address warning

Go to Network Connection following this path: Control Panel \ Network and Internet \ Network Connections

Right click on the network card you are using and click on Properties. In the Networking tab, find the item Internet Protocol Version 4 (TCP/IPv4), select it and click on Properties. This will allow you to set a static IP address for the PC in the same range as the Cyclone 208i.

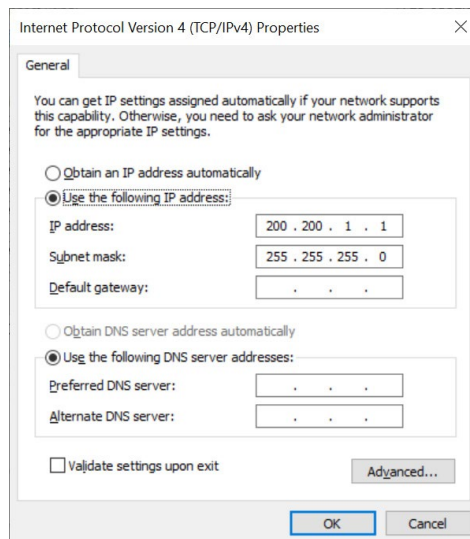


Figure 5.16: Internet Protocol Version 4 (TCP/IPv4) properties

In ArmoníaPlus, re-enable the network card with the new IP settings in the Communication Manager and follow the connection steps in Section 5.6. Once added to the workspace, you can change its IP configuration as outlined in Section 5.7, then re-establish the PC network card with the previous settings.

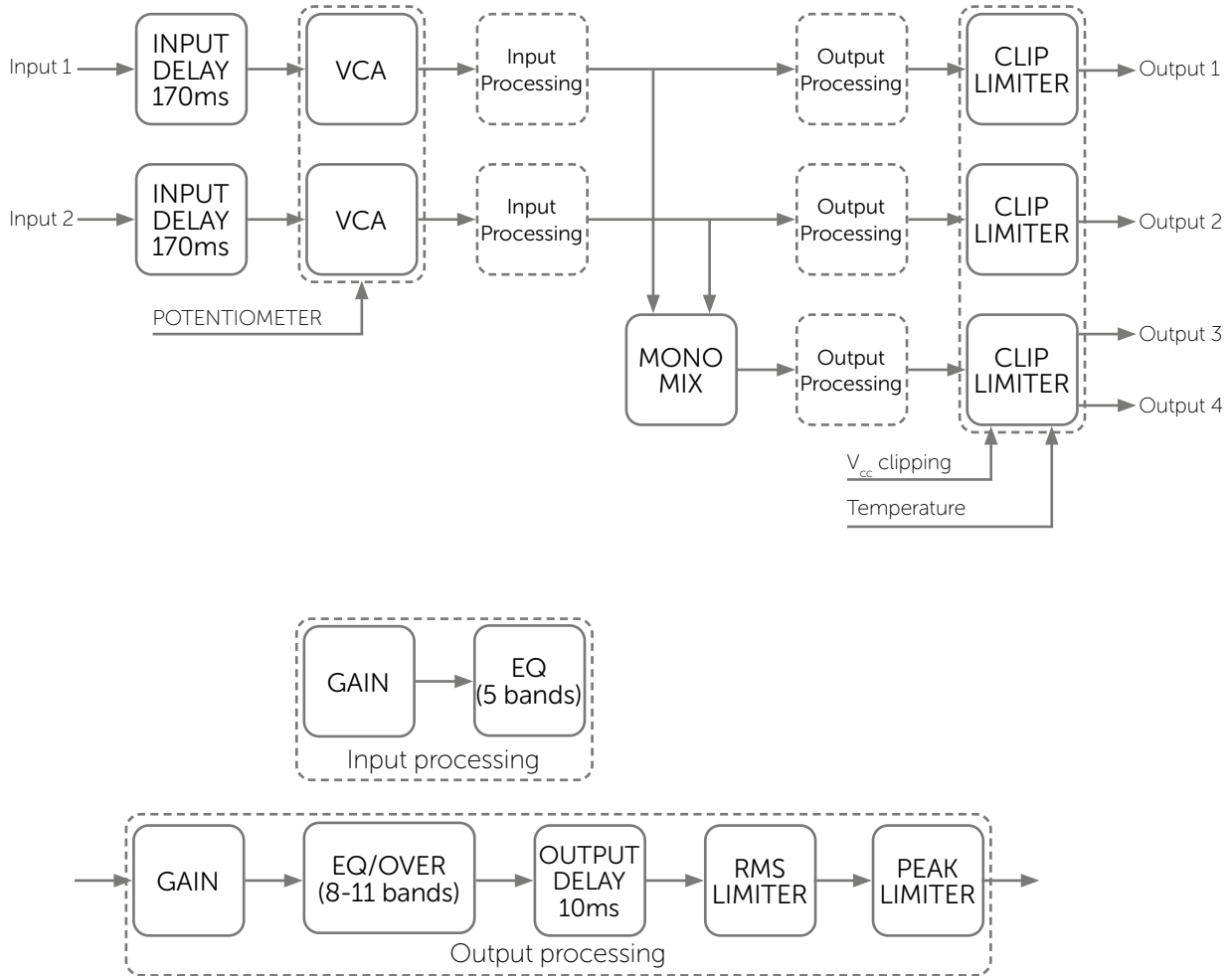
5.8 Power management

It is possible to implement a power saving strategy to reduce power consumption and heat build-up. By factory default, the power management feature is not active. Pressing and holding the Preset Select button for at least 3 seconds will toggle the power management. When active (Cyan Status LED), the Cyclone 208i will enter a low power operating mode after 15 minutes of no input signal (input level below -45 dBu). The DSP board will send a signal to the amplifier module turning off the output stages and enabling standby mode (Blue LED).

On detection of an input signal (input level above -45 dBu), the DSP board will automatically re-engage the amplifier module and exit standby mode.

5 DSP

5.9 Processing architecture



5.10 Internal signal path polarity

In order to increase the power's supply energy storage efficiency, signals coming from channel pairs 1-2 are polarity reversed, one with respect to the other within the pair, when entering the amplifier. This ensures a symmetrical use of the voltage rails: if, for example, both channels' 1 and 2 input signals are going through a peak at the same time, channel 1's energy will come from the positive voltage rails while channel 2, whose polarity is reversed with respect to channel 1, will be fed energy from the negative voltage rails. In this manner, the power supply will work symmetrically, with one channel catered by the positive rails and the other by the symmetrical negative rails. Channel 2's signal will be polarity reversed once more to ensure that both channels output with the same polarity as their corresponding input signals.

For this reason it is very important not to invert the polarity of either channels before feeding them to the module. A double polarity inversion (the first by the user inserting the input signal and the other by the amplifier's internal circuitry) results in no inversion at all. If this were the case, both channels would be weighing on only one side (positive or negative) of the power supply's voltage rails. This would result in an inefficient use of the power supply's energy.

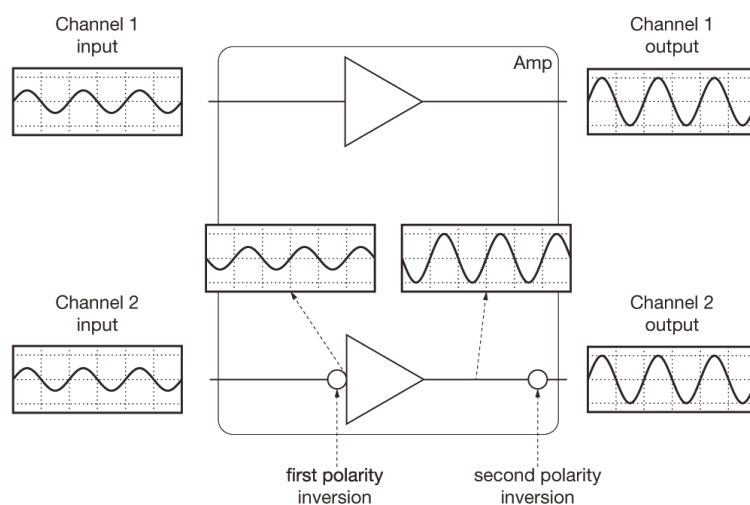


Figure 5.17: Internal signal path polarity with example input signal. Both channels 1 and 2 are fed with the same sine signal.

6 Mounting

6.1 Installation safety

To avoid mechanical hazards, please note the following:



- Safety regulations vary in different regions. Full compliance with those regulations must be your priority
- Installations must only be undertaken by fully qualified and experienced engineers/technicians who understand local regulations
- This may include consulting a structural engineer before installation of wall brackets
- Remember that all personnel have a duty of care to themselves, to their assistants, to the venue staff and to the public
- Before lifting any part of the system above head height, check the whole rig for loose tools or other items that may fall and cause injury
- Do not use a telephone (even if hands-free) whilst installing. Always concentrate fully on the installation operation
- Do not install equipment that is worn, damaged, corroded, mishandled or over-stressed in any way
- Use only Void-approved mounting equipment and accessories
- Secondary safeties should be provided in all instances where cabinets are flying or fixing overhead and should conform to local regulations

6 Mounting

6.2 Ground Stack Bracket

Parts Required:

Cyclone 208 Bracket - Included

Tools Required:

4mm Allen Key

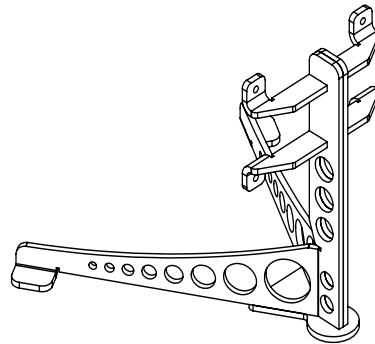


Figure 6.1: Cyclone 208 bracket

Remove all four M6 bolts from the rear of the cabinet

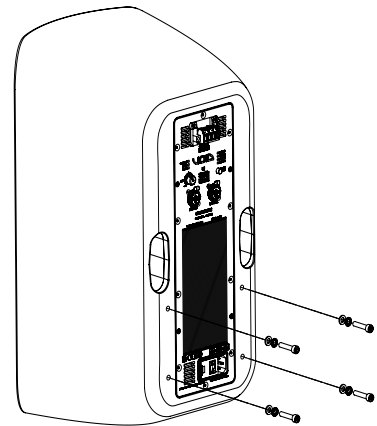


Figure 6.2: Bolt removal

Place the bracket on the rear of the cabinet and attach using all four M6 bolts

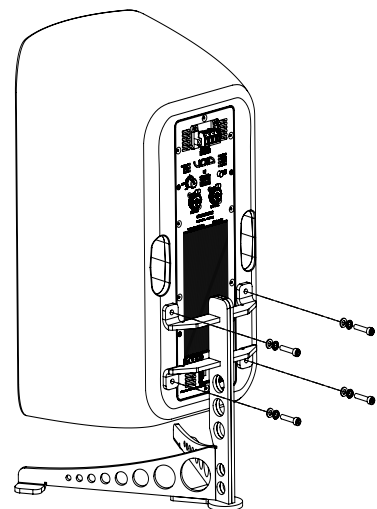


Figure 6.3: Bracket attachment

7 Service

Void Cyclone 208i loudspeakers should only be serviced by a fully-trained technician.



No user serviceable parts inside. Refer servicing to your dealer.

7.1 Return authorisation

Before returning your faulty product for repair, please remember to get an R.A.N. (Return Authorisation Number) from the Void dealer who supplied the system to you. Your dealer will handle the necessary paperwork and repair. Failure to go through this return authorisation procedure could delay the repair of your product.

Note that your dealer will need to see a copy of your sales receipt as proof of purchase so please have this to hand when applying for return authorisation.

7.2 Shipping and packing considerations

- When sending a Cyclone 208i V2 loudspeaker to an authorised service centre, please write a detailed description of the fault and list any other equipment used in conjunction with the faulty product.
- Accessories will not be required. Do not send the instruction manual, cables or any other hardware unless your dealer asks you to.
- Pack your unit in the original factory packaging if possible. Include a note of the fault description with the product. Do not send it separately.
- Ensure safe transportation of your unit to the authorised service centre.

8 Appendix A: Specifications

A.1 Cyclone 208i Specifications

Frequency Response ¹	48 Hz - Preset dependent
Maximum Output ²	119 dB cont, 125 dB peak
Nominal Dispersion	Omnidirectional
Driver Configuration	2 x 8" LF
Power Input	IEC C13
Amplifier Output	300 W (for Sub) 2 x 150 W (4 Ω)
AD/DA	24-bit, 48 kHz
Onboard Presets	4
Input	2x Combo XLR and 1/4" jack
Outputs	1x Phoenix block split for two channels
Weight	19.5 kg (43 lbs)
IP Rating	IP10
Power Requirement	AC 100 V - 240 V, 50/60 Hz with PFC
Power Consumption	Standby: < 0.5 W, Idle: 10 W, 1/4 Max Load @ 8 Ω 150 W
Enclosure	Fibreglass composite
Finish	Smooth cellulose
Mounting	Ground stack bracket included
Height	513 mm (20.2")
Width	296 mm (11.7")
Depth	323 mm (12.7")

¹ -10 dB IEC 60268-5

² Calculated

³ Measured in half space

8 Appendix B: DSP

B.1 Cyclone 208i DSP

DSP General	
Number of channels	2 in / 3 out
Architecture	Analog Devices SigmaDSP® 50 MIPS
Internal Processing	28 bit data path with 56 bit internal processing
Latency	1.02 ms fixed latency architecture
User data storage	Up to 4 local presets, unlimited via ArmoníaPlus™
Remote Control	ArmoníaPlus™

Audio	
Frequency Response	20 Hz - 20 kHz (-0.5 dB)
Max input voltage	8.2 V / +20 dBu
Max output voltage	4.1 V / +14.3 dBu
S/N ratio (analogue-to-analogue)	> 113 dB
THD+N	< 0.02% (20 Hz - 20 kHz)

Audio Processing	
Delay	340 ms input delay, 10 ms per channel output delay
Input equalizer	5 parametric equalizers: hi/lo-shelving, all-pass, band-pass, band-stop, hi/lo-pass
Output equalizer	Parametric IIR filters: peaking, hi/lo-shelving, all-pass, band-pass, band-stop, hi/lo-pass
Limiters	Peak and RMS

AD/DA Converters	
Architecture	AKM 24 bit @ 48 kHz
Dynamic range AD/DA	118 dB / 114 dB
THD+N	< 0.01% (20 Hz - 20 kHz)

8 Appendix C: Amplifier

C.1 Cyclone 208i Amplifier

Amplifier	
Maximum output power per channel @ 4Ω	150 W
Maximum output power per channel @ 8Ω	75 W
Maximum total power all channels driven	600 W
Max Output Voltage and Current	
Single Ended	35 V peak / 10 A peak
BTL	70 V peak / 10 A peak

Audio	
Gain	26 dB
Frequency Response (±1 dB , 1 W @ 8 Ω)	10 Hz - 30 kHz
Noise Floor	Typical -80 dBV (A)
Crosstalk Separation (1 kHz)	Typical > 70 dB
Input sensitivity	4 dBu
Input impedance	13 kΩ balanced
THD+N (from 0.1 W to 1/2 Power)	< 0.1% (typical < 0.05%)
DIM (from 0.1 W to 1/2 Power)	< 0.1% (typical < 0.05%)

AC Mains Power	
Power supply	Universal input, regulated Switch Mode with PFC
Nominal voltage	100-240 V AC @ 50-60Hz
Operating Voltage	85-264 V AC
Power Factor	cos > 0.9 @ 4 Ω full power

Consumption	
Standby	< 0.5 W
Idle	< 10 W
Rated Load (1/4 Max Power)	150 W
AC Current	Nominal 1.5 A Max 7 A
Inrush Current	18 Apeak

Thermal and Environment	
Operating temperature & Humidity	-20° to 65° C, 0 to 90% Non condensing
Thermal Dissipation	Cooling Plate
1/8 Max Output Power @ 4Ω	127 BTU/h @ 115 V
1/8 Max Output Power @ 4Ω	112 BTU/h
Vibration	ETSI EN 300 019-2-2
EMC immunity	EN 55103-2
EMC emissions	EN 55103-1
Safety standards	IEC 60065

8 Appendix D: Dimensions

D.1 Cyclone 208i dimensions

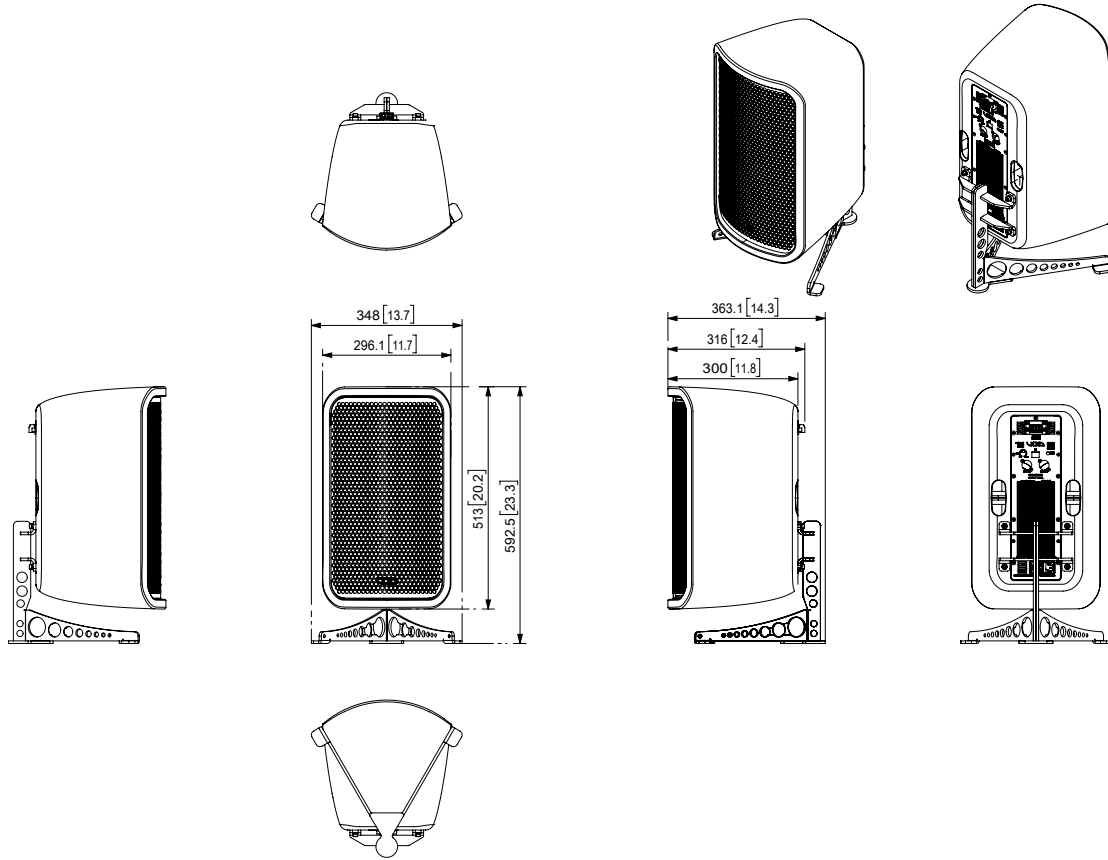


Figure 8.1: Dimensions

8 Appendix E: Architectural Specifications

E.1 Cyclone 208i architectural specifications

The loudspeaker shall be a self-powered, dual 8" (203.2mm) direct radiating, reflex loaded, low frequency loudspeaker in a fibreglass enclosure.

The enclosure shall be of a moulded fibreglass reinforced plastic construction with a smooth cellulose finish and UV-resilient paint. External dimensions of cabinet (H) 513 x (W) 296 mm x (D) 299 (20.2" x 11.7" x 11.8") with stand (H) 593 x (W) 348 x (D) 363 and (23.3" x 13.7" x 14.3") and weigh 19.5 kgs (43 lbs).

Performance specifications of a typical production unit shall be as follows: frequency response of 48 Hz – Preset dependent (-10 dB IEC 60268-5) with a maximum SPL of 125 dB peak. Power handling shall be 300 W AES with a rated nominal impedance of 8 Ω .

The low frequency transducer shall be constructed on cast aluminium frame with a treated paper cone, a 2" (50.8 mm) voice coil, wound with copper wire on a high-quality former for high power handling and long-term reliability.

The system shall be powered by its own dedicated 300 W amplifier module with DSP management and two 150 W outputs at 4 Ω . Inputs shall be combination XLR and 1/4" type and powered outputs shall be Phoenix. DSP features shall be accessed via dedicated ethernet connection.

The loudspeaker shall be a Void Acoustics Cyclone 208i.

F.1 Changelog

Document Version	Notes	Valid for S.N
UG10916-1.1	Updated specs to IEC 60268-5	C208PXXXX - Current

NORTH AMERICA

Void Acoustics North America

Call: +1 (630) 686 6616

Email: sales.usa@voidacoustics.com

HEAD OFFICE

Void Acoustics Research Ltd

Unit L, The Fulcrum

Vantage Way

Poole

BH12 4NU

United Kingdom

Call: +44(0) 1202 666006

Email: hello@voidacoustics.com



Hear. Feel. Connect.

voidacoustics.com