

Tri Motion



A high-output, three-way, bi-amped sculpted loudspeaker array with triangular waveguides



FREQUENCY RESPONSE¹

125 Hz – 20 kHz



MAXIMUM OUTPUT²

135 dB cont, 141 dB peak



NOMINAL DISPERSION

90°H x 60°V



POWER HANDLING

LF: 700 W AES
MHF: 250 W AES

Nightclubs & Bars

Hotels & Resorts

Retail

Gyms & Fitness

Restaurants & Cafés

Festivals & Events

The Tri Motion is designed for high-output, combining controlled wide 90°H x 60°V dispersion with efficient performance. Its low-resonance fibreglass composite construction supports consistent sound reproduction, while its distinctive form makes it suitable for visually-led environments.

Triangular format waveguides provide enhanced pattern control, supporting consistent dispersion across large spaces. Low-resonance construction helps reduce unwanted vibration, maintaining clarity and definition during operation.

Designed for a range of environments, the Tri Motion offers flexible installation through an integrated flying and mounting system, and is available in left and right configurations.

KEY FEATURES

Three-way, bi-amped sculpted loudspeaker array

Triangular format waveguides or enhanced pattern control

Wide 90°H x 60°V dispersion for controlled coverage

FIR optimised preset with Void amplifiers

Low-resonance fibreglass composite construction

Integrated flying and mounting system

Visually-striking appearance for style-led environments

Available in left and right configurations

Compact vertical footprint allows close proximity mounting to ceilings

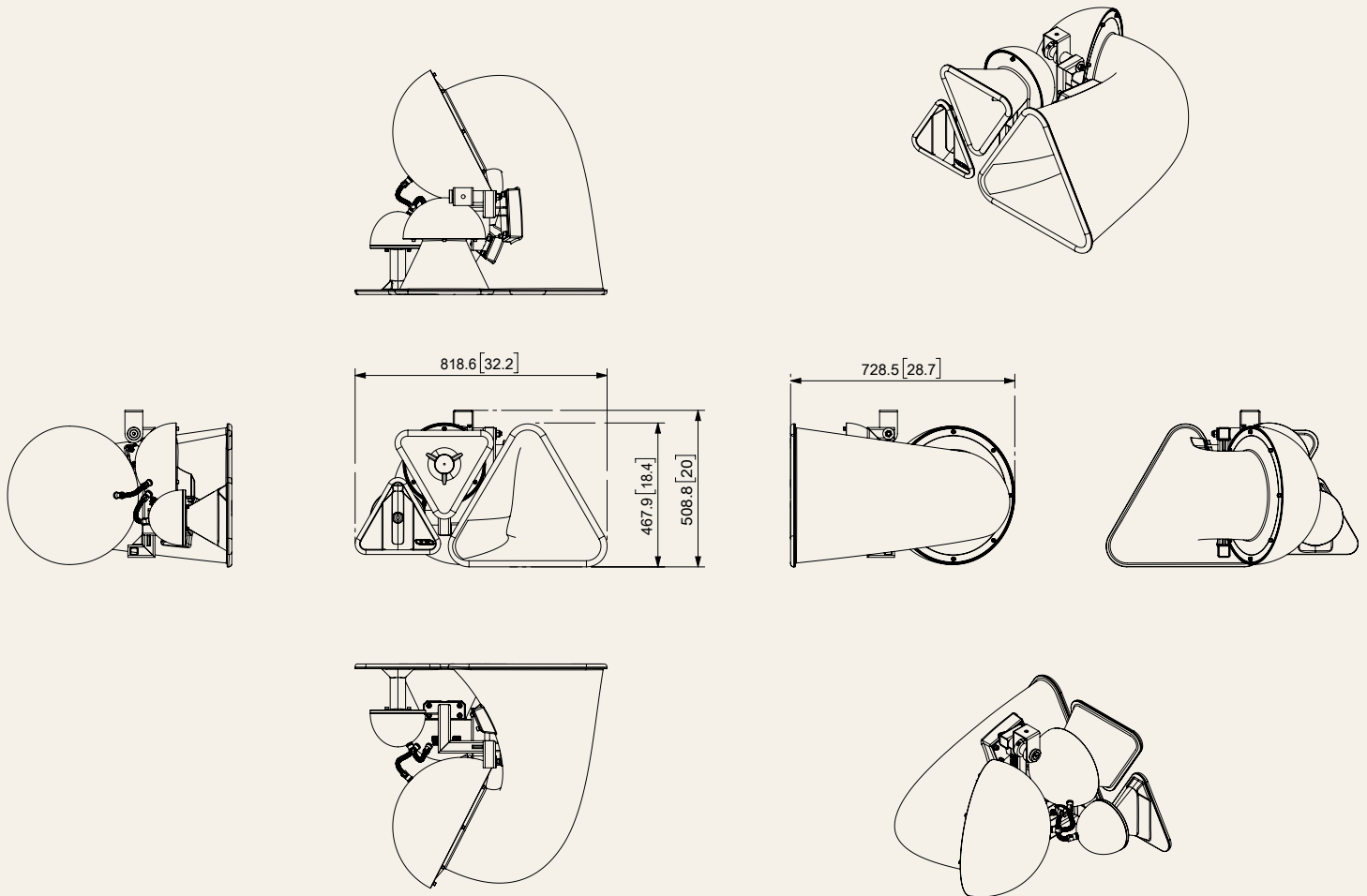
Custom RAL and KROME finishes are available upon request

SPECIFICATIONS

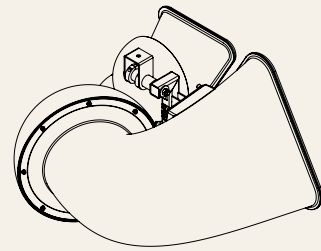
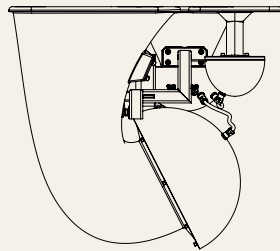
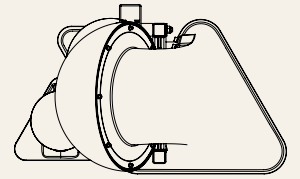
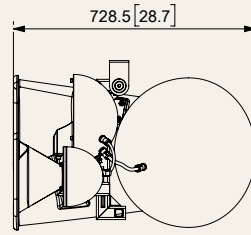
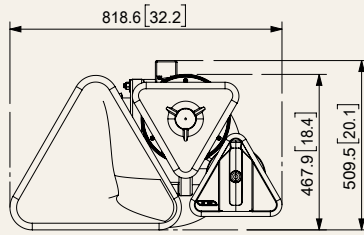
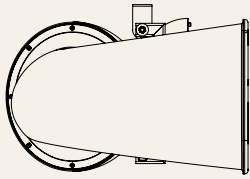
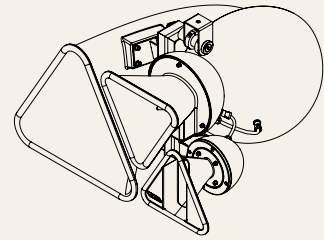
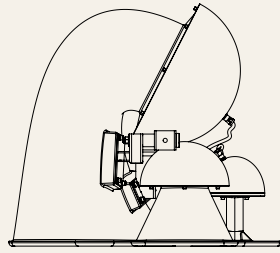
Frequency response¹	125 Hz – 20 kHz
Maximum Output²	135 dB cont, 141 dB peak
Nominal Dispersion	90°H x 60°V
Sensitivity³	LF: 107 dB 1W/1m, MHF: 110 dB 1W/1m
Driver Configuration	1 x 15" LF, 1 x 8" MF, 1 x 1.5" HF compression driver
Power Handling	LF: 700 W AES, MHF: 250 W AES
Nominal Impedance	LF: 8 Ω, MHF: 8 Ω

Suggested Minimum Amplifier	Bias Q2+
Weight	47.1 kg (103.8 lbs)
Connections	2 x 4-pin locking connector
Enclosure	Fibreglass composite
Finish	Smooth cellulose
Mounting	Integral mounting system

¹-10 dB IEC60268-5 ²Calculated ³Measured in half space



Right Configuration



Left Configuration

© 2026 Void Acoustics Research Ltd.

This information is subject to change without notice. For the latest online version, visit: voidacoustics.com Void Acoustics and the Void logo are registered trademarks of Void Acoustics Research Ltd. in the United Kingdom, USA and other countries; all other Void trademarks are the property of Void Acoustics Research Ltd.